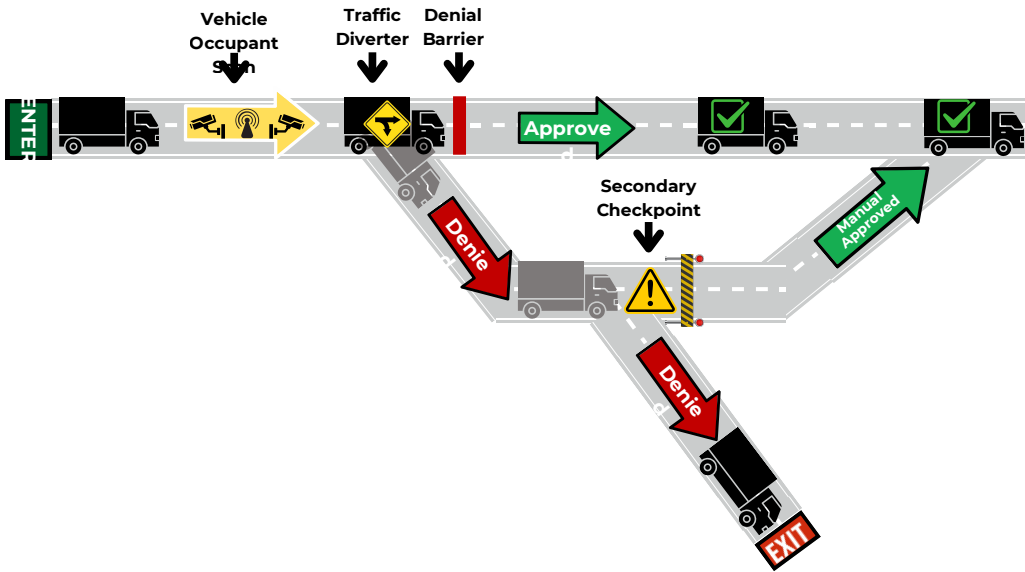
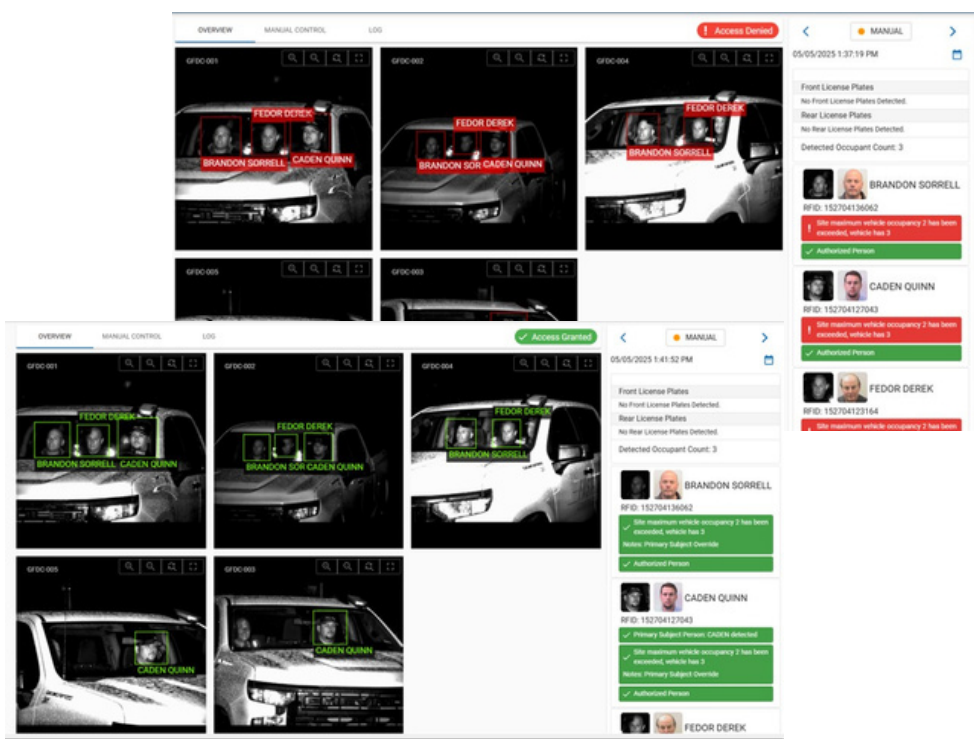


SwiftShield: Intelligent Security Design & Implementation

In partnership with Dallas/Fort Worth International Airport, Forge developed a more efficient, faster, and more secure vehicular checkpoint. Forge customized and deployed a camera technology system that automatically authenticates vehicle occupants 24/7 without stopping. SwiftShield cameras see into vehicles day or night, even in adverse conditions. In just a few seconds, the Facial Recognition software rapidly authenticates vehicle occupants against a gallery of over 30,000 faces.

Images are captured from multiple angles as the vehicle approaches the primary denial barrier. If all occupants are validated, the barrier opens, and the vehicle may proceed without even coming to stop. If the occupants cannot be validated, the vehicle is diverted to a secondary lane where other validation means may be used (back up facial recognition scan, ID badge scan, etc.)

An associated mobile application enables multiple passengers in larger vehicles to be pre-authenticated and associated with a driver before reaching the gate. Additional options for multi-factor vehicle authentication include License Plate Recognition with associated vehicle make, model, and color; an RFID (Radio-Frequency Identification) tag; and/or a 2D barcode.



The initial SwiftShield Solution was so well-received by DFW security teams and authorized airport personnel that Forge is currently expanding the solution to other access points at the airport. SwiftShield's flexible features will allow DFW to rapidly adapt the solution across multiple access points with varying security requirements.

Not only available for airports, our Access Control System is ready for swift deployment across various controlled access infrastructures – with or without existing security systems, including:

- ✓ Military Installations
- ✓ Corporate Facilities
- ✓ Transportation Terminals
- ✓ Stadiums, Event Centers

SwiftShield automates the validation of credentials, elevates protection of terminal areas, and reduces reliance on high-cost, manual security across multiple access points. **More secure facilities shouldn't mean increased burden for the teams who are supposed to be there. SwiftShield gets the right people to the right places, fast.**

- ✓ Exterior checkpoints **secured 24/7/365** without having to rely on people being on-site.
- ✓ Matching algorithms provide the **ability to automate** what has traditionally been a very manual verification process.
- ✓ Better camera technology **mitigates environmental issues** (glare, weather, time of day) to see into vehicles as they move.
- ✓ Authentication without having to stop the vehicle **greatly improves throughput**.
- ✓ Especially useful with “known” populations where the same users pass through each day.
- ✓ **Real-time authentication** of a person's access is confirmed vs. reliance on a token that could be given to someone else.
- ✓ **Eliminates the need for close contact** with others to scan or validate their documents or identification – reducing the health risk.



Forge provides subject matter expertise in restricted domestic and international facility security, biometric access solutions, law enforcement, and the integration of multilayered systems. Targeted experience exists in aviation and transportation beyond DFW, including implementation of baggage screening and data analysis programs for the U.S. Transportation Security Administration (TSA), and U.S. Military Aviation programs, such as predictive maintenance solutions for the F-22 Raptor and the H-1 helicopter. As a technology-agnostic team, we explore our network of technology partners to identify the best-in-class solutions – uniquely fit to meet the needs of each client's problem.

See a video of how it works here:

